



NEWSLETTER

Number 2 | Term 1 | Week 6 | 6 March 2024

EAST HAMILTON HILL PRIMARY SCHOOL



FROM THE PRINCIPAL

Term One is flying by and our students are now fully immersed in their learning programs. It is a short and extremely busy term, with events and activities every week to enrich our students learning. Up to date information is communicated through Connect and the schools Facebook page, to ensure no one misses a thing. If you have questions relating to your child's academic progress or wellbeing, their classroom teacher is the first person to speak to. The parent interviews tomorrow are great opportunity to do just that. If you have concerns relating to any other aspect of the school, please feel free to contact myself via the office, or pop in and see me.

PARENT SURVEY

The "Tell Them From Me" survey is a suite of surveys capturing the thoughts and opinions of our students, parents and teachers. The survey gives us a great insight into areas of strength and improvement, which guides our school improvement agenda. This is the final year of a three year data collection cycle and information collected is analysed against results from the previous two years. Results are based on a comprehensive questionnaire covering several aspects of the parents' perceptions of their child's experiences at home and school. The survey is anonymous, voluntary, and easy-to-use and I ask that every parent take the opportunity to share their feedback with us. The TTFM Parent Survey for 2024 is now open and can be accessed via the QR code below:



We encourage all parents to take a few minutes to share your opinions and thoughts with us as your voice is essential to the work we do. The survey closes on Thursday 28 March 2024.

NAPLAN

Our Year 3 and 5 students will start NAPLAN testing next Wednesday 13 March 2024. NAPLAN tests are national standardised tests that provide a snapshot of student progress, to inform national data. The information provided through the outcomes of these assessments help us as a school to judge how we are tracking in relation to schools of a similar context across Australia, and the areas that we need to focus on to keep improving. Our focus as a school is on students trying their best and completing the tests to the best of their ability. Whilst they are well prepared for the assessments, we acknowledge that this is one test on one day and are not a full representation of a student's ability. Our students have so many strengths and talents that cannot be encapsulated in a standardised test and these are the things we celebrate.

EARLY CLOSE FOR PARENT INTERVIEWS

Tomorrow (Thursday 7 March) the school will be closing at 11:15am for parent-teacher interviews.

The aim of this half day is to ensure that all parents have the opportunity to meet with their child's classroom teacher, either face-to-face or over the phone to discuss academic progress, goals and any other matters relating to classroom learning. Closing the school for half a day is not a decision that is taken lightly by us or the Education Department, who ultimately approve the closure. Providing time for teachers to meet with parents is a priority and school closures for this purpose are common practice across schools in Australia. If you have any concerns regarding this, I encourage you to speak directly with myself or a member of your school board, rather than debating the merits in class group chats. Clear and open communication between the school and our community is vital for the success of our students. The parent teacher meetings are an incredibly valuable time for both parents and teachers and I encourage all parents to book an appointment time with classroom teachers.

PARKING

3:00pm on a weekday is a busy time for any school and parking is at a premium. With this in mind, we ask that our school community adhere to the parking signs around the school and refrain from parking in "No Standing" areas and on the property of our neighbours.

www.easthamiltonhillps.wa.edu.au



SWIMMING

Our next cycle of swimming lessons will take place during Weeks 7 and 8. Our Pre-Primary A, Pre-Primary B, Year 2 and Year 6 students will be swimming in Week 7, with our Year 1 and Year 4 students swimming in Week 8. Notes have been sent home with information specific to each year level. **Please ensure that permission slips and enrolment forms are returned ASAP and payment of \$34 is paid by Friday 8 March 2024.**

ICE BREAKER

We look forward to celebrating a successful start to the year at our annual Ice Breaker on Friday, 8 March 2024. Come along and join the community for a picnic on the bottom oval, near our new football goals. Bring a footy to kick around and a gold coin for the Year 6 Icy Pole fundraiser. Sweet Betty food truck will also be there on the day selling yummy treats.

Grady Scheiblehner

PRINCIPAL

Grady.scheiblehner@education.wa.edu.au

IMPORTANT DATES TO REMEMBER FOR 2024

TERM 1 - 2024

- ♦ **Week 6** - Monday, 4 March - Labour Day Holiday
Thursday, 7 March 2024 - School early close 11.15am
- Parent Interviews
Friday, 8 March 2024 - Assembly Rm 15 8:50am
Friday, 8 March 2024 - Ice Breaker 3:00pm
- ♦ **Week 7** - Monday, 11 March 2024 P&C AGM 9:00am
11 to 15 March 2024 - NAPLAN Years 3 & 5
11 to 15 March 2024 - Swimming lessons - PP, Years 2 and 6
- ♦ **Week 8** - Monday, 18 to 22 March 2024 Swimming lessons - Years 1 and 4
Monday, 18 March 2024 - Year 6 Incursion
Friday, 22 March 2024 - CARE Assembly and Harmony Day
- ♦ **Week 9** - Monday, 25 March 2024 - PP to Yr 6 Incursion "Hanging by a Thread".
♦ Wednesday, 27 March 2024 - Years 5 & 6 Cricket Carnival.
Thursday, 28 March 2024 - Easter Hat Parade, Colour Run and last day of Term 1.
Friday, 29 March 2024 - GOOD FRIDAY

School returns for Term 2 - Monday, 15 April 2024.

For all other important dates that may arise we will update the Term Planner as needed and send notes home.

CHAPLAIN NEWS

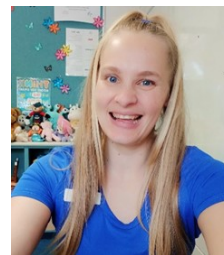
YouthCARE Chaplains care for the social, emotional, mental, and spiritual wellbeing of students, families, and staff in state school communities throughout Western Australia. These Chaplains are available to listen compassionately, refer to extra help where necessary and run programs which not only address issues but create positive cultures within schools.

I have the immense privilege of being the Chaplain at East Hamilton Hill Primary, attending on Mondays, Tuesdays and Fridays. I would love to meet you if I haven't yet, so definitely feel free to say hello if you see me around. If you have any questions about my role, or if you think I may be able to help you in any way, please get in touch, if I'm unable to assist I'll do my best to connect you with someone who can.

We also have a Counselling Student from Notre Dame University who will be completing her practical training at our school this coming Semester – Olivia Kemp. Feel free to welcome her to the School Community when you see her. If you think you or your child would benefit from her support, please get in touch with myself or the Deputy Principal Craig Beard, we'd be happy to chat about what she can offer.

Looking forward to what is shaping up to be a wonderful term ahead!

Your Chaplain,
Esther Maxwell



Esther Maxwell
School Chaplain



Olivia Kemp
Counselling Student

ECLIPSE UNIVERSAL UNIFORM SHOP - NEWS

The Uniform Shop now provides an online service and delivered to the school every Friday.

See all information via the school website:

<https://easthamiltonhillps.wa.edu.au/parents/uniforms/>

Phone: 08 9249 4344 (8:30am – 4:30pm Mon to Fri)

Email: reception@eclipseuniversal.com.au

Website: www.eclipseuniversal.com.au
(Password - EHPS0016)



TERM DATES 2024

- *Term 1 Wednesday, 31 January - Thursday, 28 March 2024
- *Term 2 Monday, 15 April 2024 - Friday, 28 June 2024
- *Term 3 Monday 15 July 2024 - Friday, 20 September 2024
- *Term 4 Monday 7 October 2024 - Thursday, 12 December 2024

Professional Development Days 2024

- *Term 1 Friday 1 March
- *Term 2 Friday 26 April
- *Term 3 Friday 16 August
- *Term 4 Monday 7 October
Friday 13 December



CONGRATULATIONS

to the following students for receiving Honour Certificates on Friday, 16 February 2024.

CARE: CO-OPERATION

Pre-Primary A	Hrida Joachim
Pre-Primary B	Mana Colt
Room 1	Claire Charlie
Room 13	Mahleik Billy W
Room 14	Theo Eden
Room 15	Isla Kian
Room 16	Isaac Karma
Room 17	Pippa Josie
Room 9	Levi Tayla B
PE	Eric
Music	Dominic
Science	Ava
Noongar	Luka F
Visual Art	Eden

MERENY- AP YANGINY (CANTEEN) NEWS

Please note cut off times for ordering food on the canteen days (Wednesdays and Fridays) is 7:00am for the online ordering on "My School Connect" and 9:00am at the Canteen window. Unfortunately, the EHHPS Canteen team cannot take late orders.

Visit My School Connect:

<https://myschoolconnect.com.au/east-hamilton-hill-ps-canteen>

Sharon Borehan
Canteen Manager



NEWSLETTER

www.easthamiltonhillps.wa.edu.au

ROOM 9 ASSEMBLY



COCKBURN COMMUNITY NEWS



OPEN DAY

Unlock your child's potential and discover the opportunities on offer at Fremantle College.

- Immerse yourself in a College Tour and learn about the array of educational opportunities available to your child
- Explore our diverse Specialist Programs, book into an information session
- Engage in conversations with our dedicated teaching staff
- Gain insights into our wellbeing and pastoral care practices
- Be entertained by our Specialist Contemporary Music Students from the FC Solar Stage
- Enjoy a sausage sizzle and engage with community members

Monday
22 April 2024
3:30 - 5:30pm

FREMANTLE COLLEGE

Book today via QR code, or at:
<https://fremantlecollege.wa.edu.au/fremantle-college-open-day/>



HAMI HILL COMMUNITY GARAGE SALE

SUN MARCH 24TH
8 am - 1 pm

WHAT IS IT?
Lots of Hami Hill locals are going to hold garage sales on the same day

WHERE IS IT?
Like a normal garage sale, we use our own garages or driveways

WHY?
Lots of sales happening simultaneously will attract more buyers and publicity

HOW DO I TAKE PART?

- 1) Tell your friends and neighbours and spread the word
- 2) Simply run your own garage sale on the date above (there's no cost!)
- 3) Share your street on the Facebook event page (this is optional) and we'll make a map for buyers

WHERE DO I FIND MORE INFO?
Visit the Facebook Event below or scan the QR code

<https://fb.me/e/gwE3IjyTw>

www.easthamiltonhillps.wa.edu.au

Inspired Learning • Inspired Future